

GPSTC
GEORGIA PUBLIC SAFETY TRAINING CENTER


**OFFICER SURVIVAL:
VEHICLE STOPS**

Firearms Division
Georgia Police Division
Georgia Public Safety Training Center
(478) 993-4327

COPYRIGHT © 2013 GEORGIA PUBLIC SAFETY TRAINING CENTER
www.gpstc.org


Terminal Performance Objective

Given actual and hypothetical scenarios, students will apply appropriate techniques in conducting unknown risk and high risk vehicle stops in accordance with Remberg's *Tactical Edge*.



Enabling Objectives

- Discuss vehicle positioning for the unknown risk stop.
- Discuss approach procedures for the unknown risk stop.
- Discuss vehicle positioning for the high risk stop.
- Discuss procedures for controlling the suspect's movement and vehicle search techniques.



Complacency:

- Content to a fault; self-satisfied



Fight Complacency:

- Things to Remember:
 - Every traffic stop has the potential for violence
 - Criminals use vehicles for transportation
 - What you don't know, may hurt you
 - No traffic stop is ever routine



Threat Assessment:

- What is the nature of the offense?
- How many occupants?
- What is the behavior of the occupants?
- What weapons could be involved?
- What type of vehicle are you stopping?
- What environmental hazards exist?
- What are your strengths in the situation?



Key Points for Safety:

- Always notify dispatch of pertinent information.
- Look for traffic before you exit your vehicle.
- Watch occupants for suspicious activity.
- Always scan for available cover.
- Never hold anything in your weapon hand.
- Check the vehicle's trunk.
- Scan the inside of the vehicle before you walk by the vehicle.



Key Points for Safety:

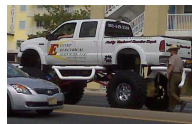
- If dark, have the driver turn on their dome light
- Have all the occupants keep their hands in view
- You may wish to ask if there are any weapons present
- Don't look at documents while at the vehicle
- May have the driver to turn off the ignition
- Don't turn your back on the vehicle
- Do not pass the "B" pillar when at all possible.



Important Points to Consider

Specialty Vehicles:

- Motorcycles
- Vans
- Semi Trucks
- Tall Vehicles
- Limousines



Important Points to Consider

Where to Write the Citation?

Several Options:

- In your driver's seat
- Between the vehicles
- Behind your patrol car
- Should I have the driver exit?

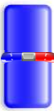


Vehicle Positions and Approaches

In-Line Position

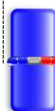
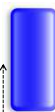


- May be necessary when road conditions dictate
- Examples:
 - ✓ curbs
 - ✓ retaining walls
 - ✓ guard rails




Vehicle Positions and Approaches

In-Line Position with Standard Approach



Vehicle Positions and Approaches

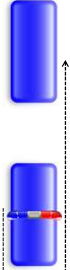
In-Line Position with Front Crossover Approach



GPSTC

Vehicle Positions and Approaches


In-Line Position with Rear Crossover Approach



GPSTC

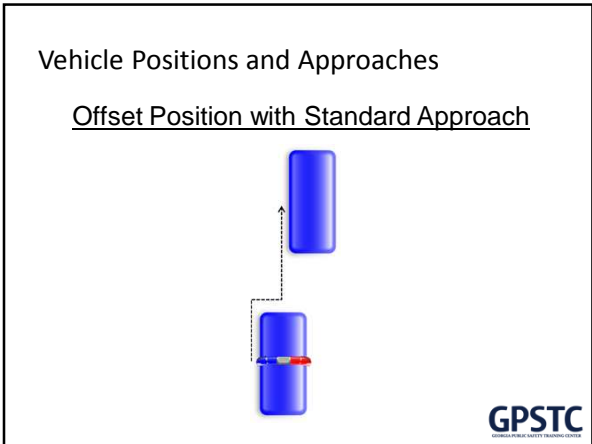
Vehicle Positions and Approaches

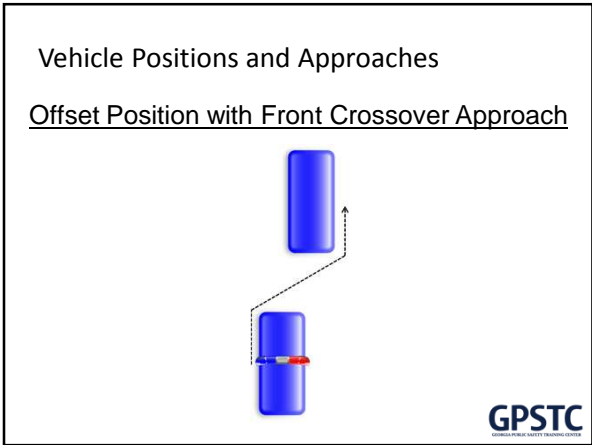
Offset Positions

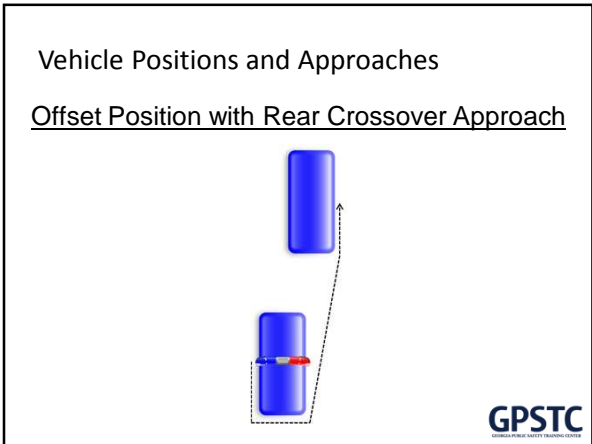


- Can provide a pocket of protection from traffic if the officer approaches at the driver's side
- Wheels should be turned left
- Never walk past any occupants of the vehicle

GPSTC







Vehicle Positions and Approaches

Angled Position

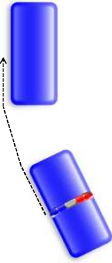


- Offers the officer the most coverage from the suspect
- Can use the engine block as cover
- Do not angle so much that you headlight interfere with on-coming traffic
- Offers protection from passing cars



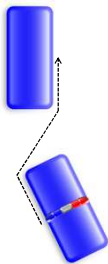
Vehicle Positions and Approaches

Angled Position with Standard Approach



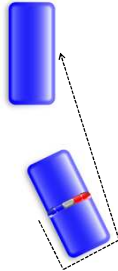
Vehicle Positions and Approaches

Angled Position with Front Crossover Approach

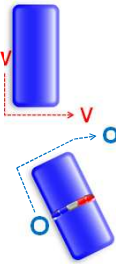


Vehicle Positions and Approaches

Angled Position with Rear Crossover Approach



Calling the Driver Out



- Keeps the officer away from any potential weapons in the vehicle
- Do not conduct business between the two vehicles
- Allows for constant observation of the violator
- Place the violator between you and his vehicle
- Do not have your back to the roadway



Terminal Performance Objective

Given actual and hypothetical scenarios, students will apply appropriate techniques in conducting unknown risk and high risk vehicle stops in accordance with Remberg's *Tactical Edge*.



Enabling Objectives

- Discuss vehicle positioning for the unknown risk stop.
- Discuss approach procedures for the unknown risk stop.
- Discuss vehicle positioning for the high risk stop.
- Discuss procedures for controlling the suspect's movement and vehicle search techniques.



Questions?